

LOWSKY FOR LEASE

COMMERCIAL REAL ESTATE CO.

2528 Elm St. Dallas, TX 75226



Space Available

2nd Floor: 4,500 square feet

*entrance to the 2nd floor is located through the double-doors closest to the parking lot.

2022 Demographics 1 mi. 2 mi. 3 mi.

Total Population	17,367	95,927	139,565
Daytime Employment	36,131	140,426	189,961
Average HH Income	\$81,351	\$93,983	\$102,088

provided by CoStar

Property Highlights

- Directly across from the new Deep Ellum Epic Building.
- 6 private offices, 2 semi-private offices, and a large conference area.
- Space has a white infinity photography room.
- Reserved parking spaces in parking lot next door

JONATHAN TOBOLOWSKY

(469) 578-1280

JONATHAN@LOWSKYCOMMERCIAL.COM

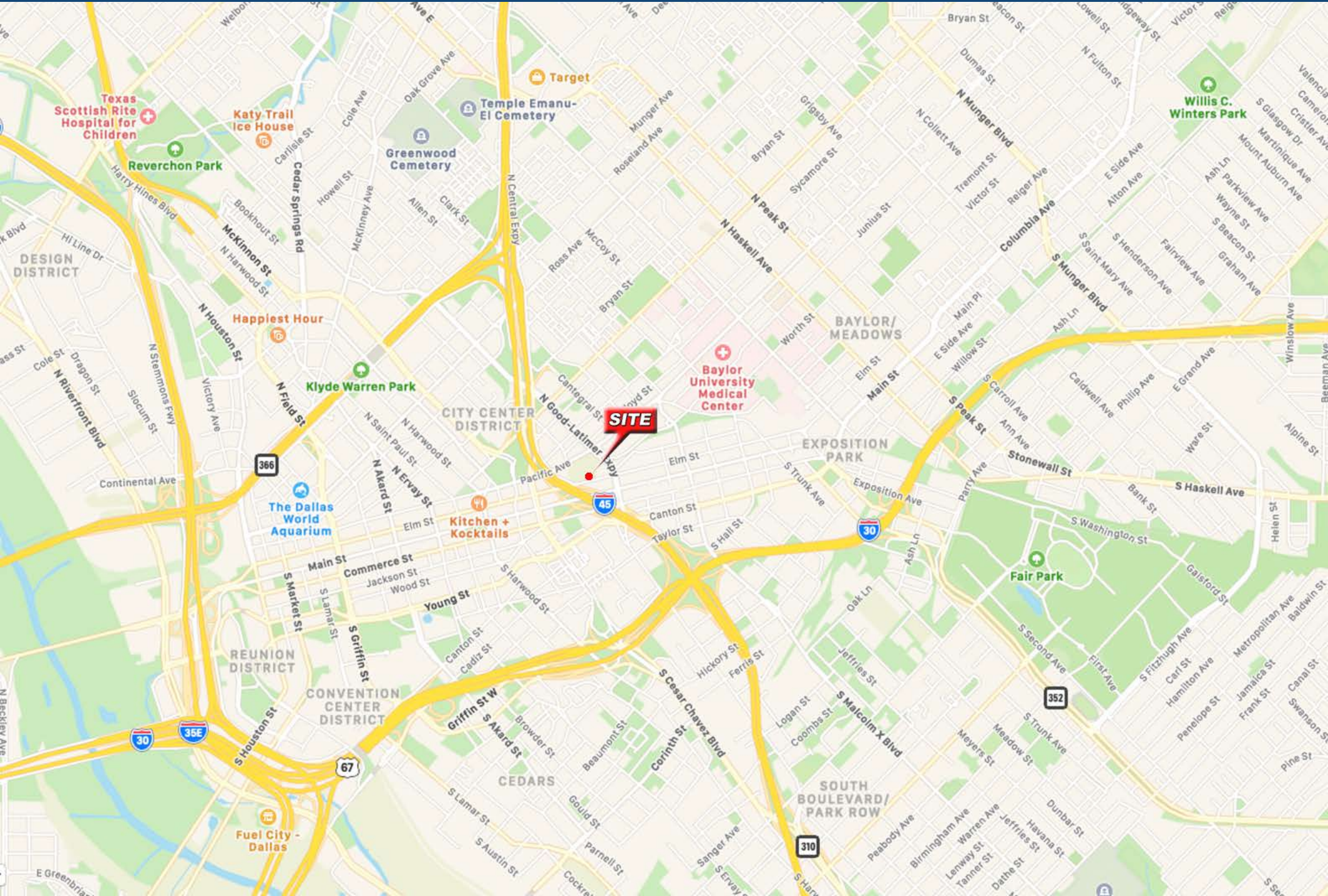
WWW.LOWSKYCOMMERCIAL.COM

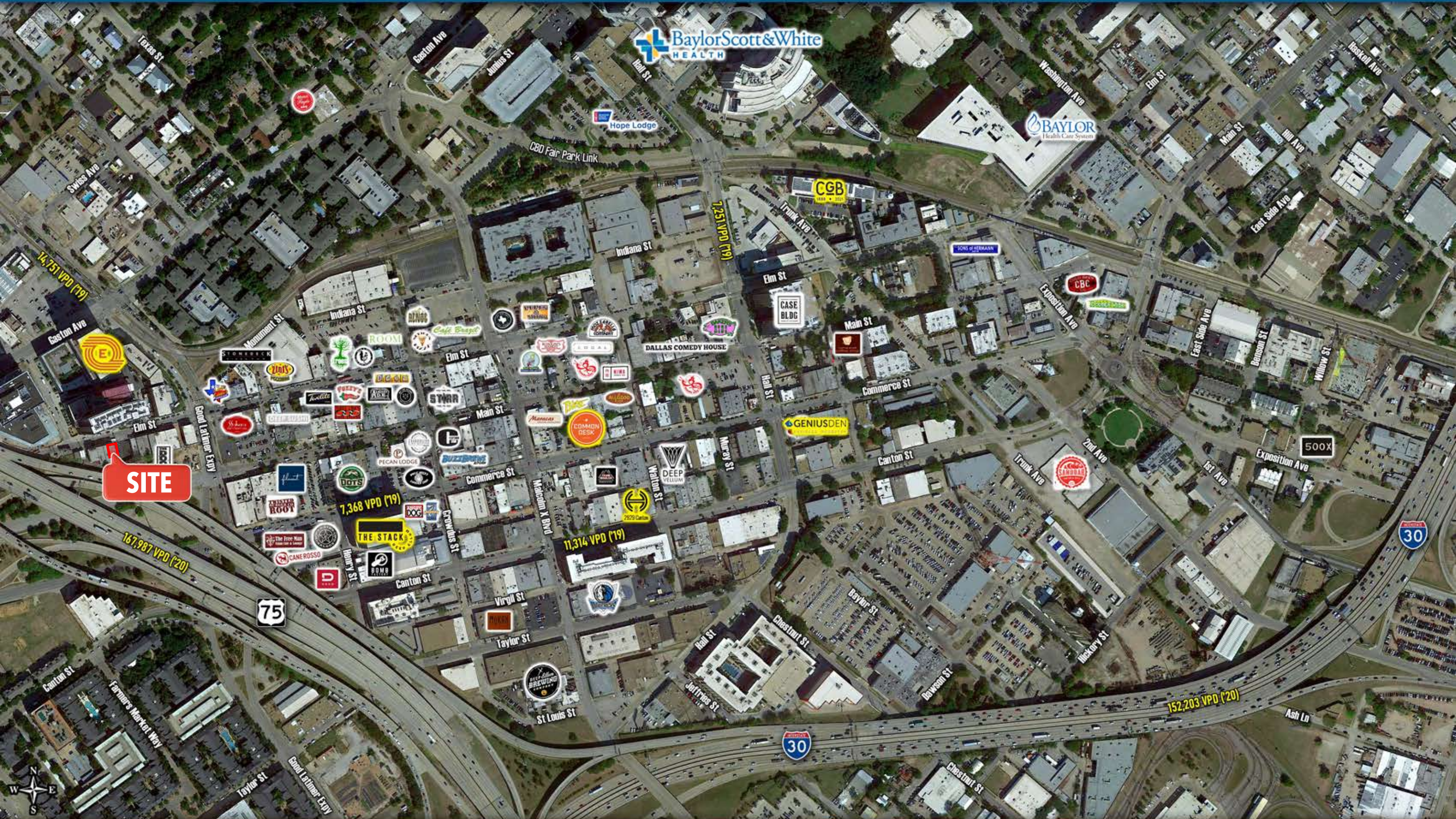
LOWSKY

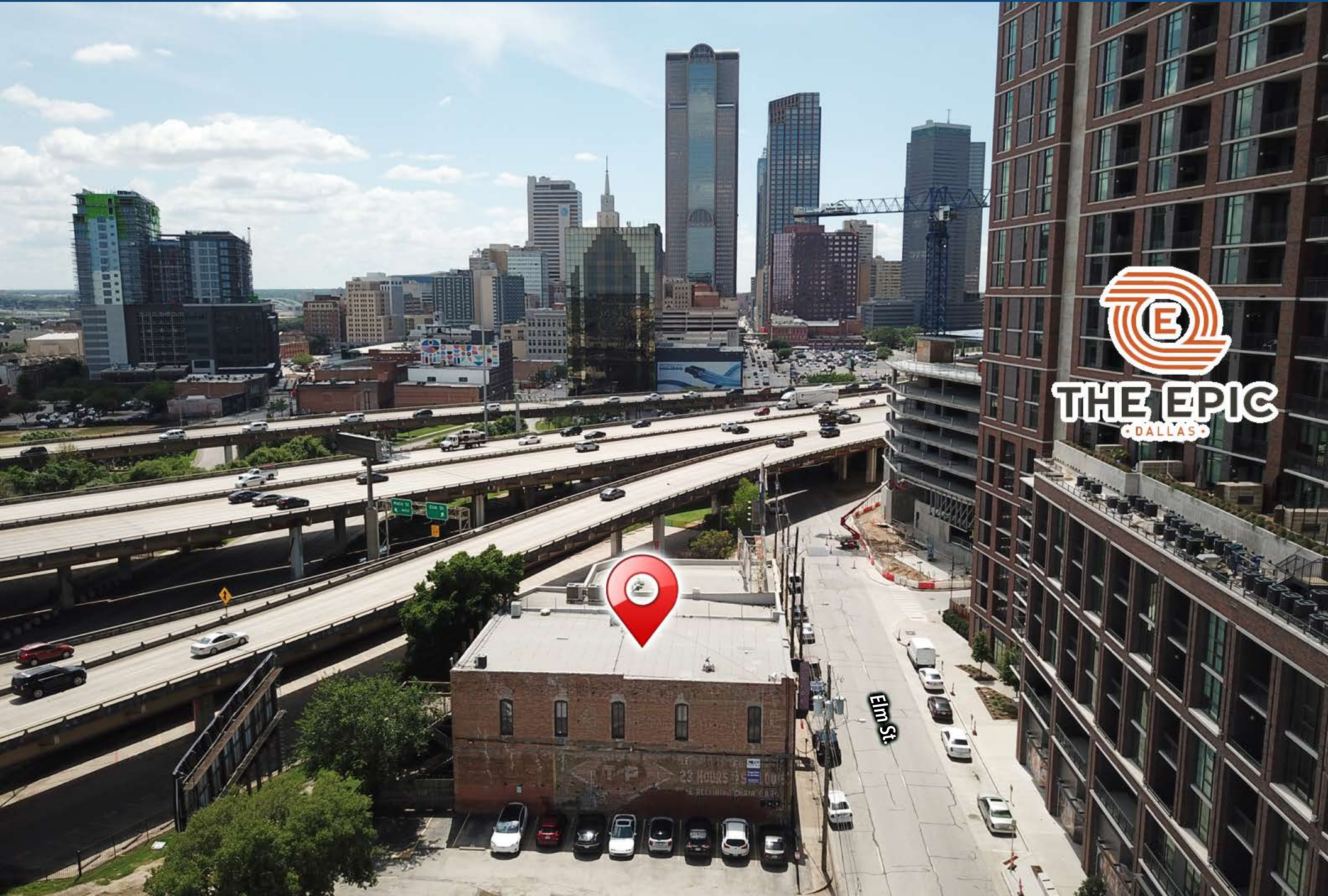
COMMERCIAL REAL ESTATE CO.

FOR LEASE

2528 Elm St. Dallas, TX 75226







THE EPIC
DALLAS



